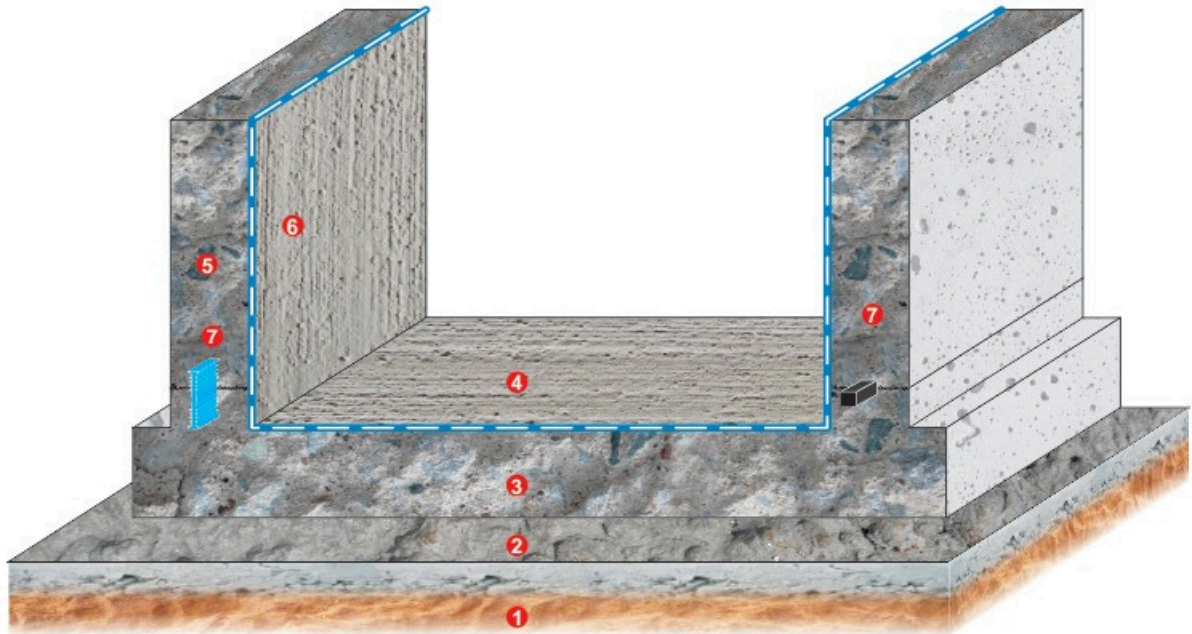




Product / sản phẩm:
MAXSEAL SUPER





WATERPROOFING TO FLOOR & WALL

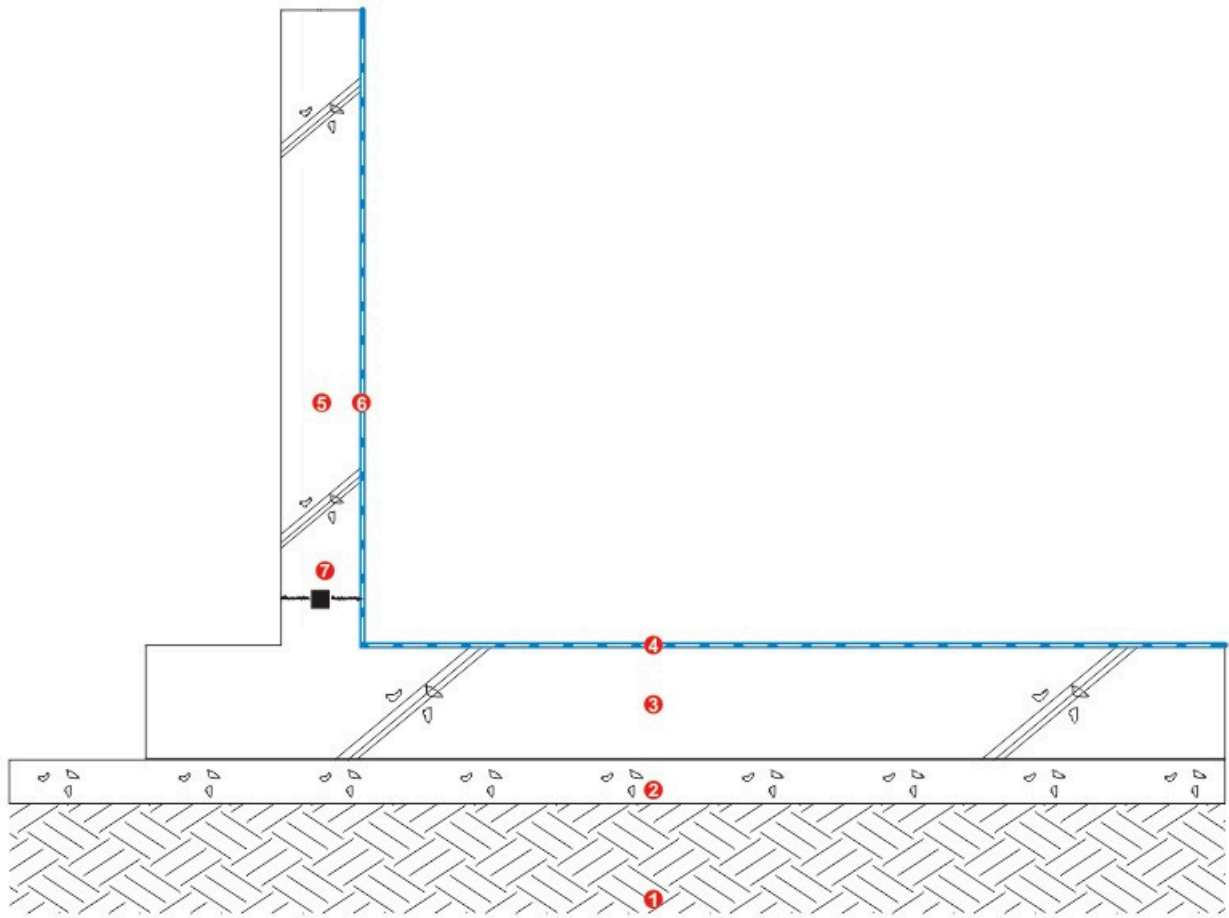
1. Compacted soil or sand
2. Blinding (lean) concrete.
3. Basement floor slab.
4. Waterproofing system: **MAXSEAL SUPER**
5. R.c. Wall
6. Waterproofing system: **MAXSEAL SUPER**
7. **Bentonite Hyperstop**

CHỐNG THÂM CHO SÀN & TƯỜNG

1. Đất hoặc cát đầm chặt.
2. Bê tông lót.
3. Sàn bê tông cốt thép
4. Hệ thống chống thấm: **MAXSEAL SUPER**
5. Tường bê tông cốt thép
6. Hệ thống chống thấm: **MAXSEAL SUPER**
7. Băng cản nước **Hyperstop DB**



TYPICAL SPECIFICATION - QUY TRÌNH KỸ THUẬT



WATERPROOFING FOR / CHỐNG THẨM CHO LIFT PIT HỒ THANG MÁY

Project:

Shop Drwg

Manufacture & Supplier by:



Design & installation by:



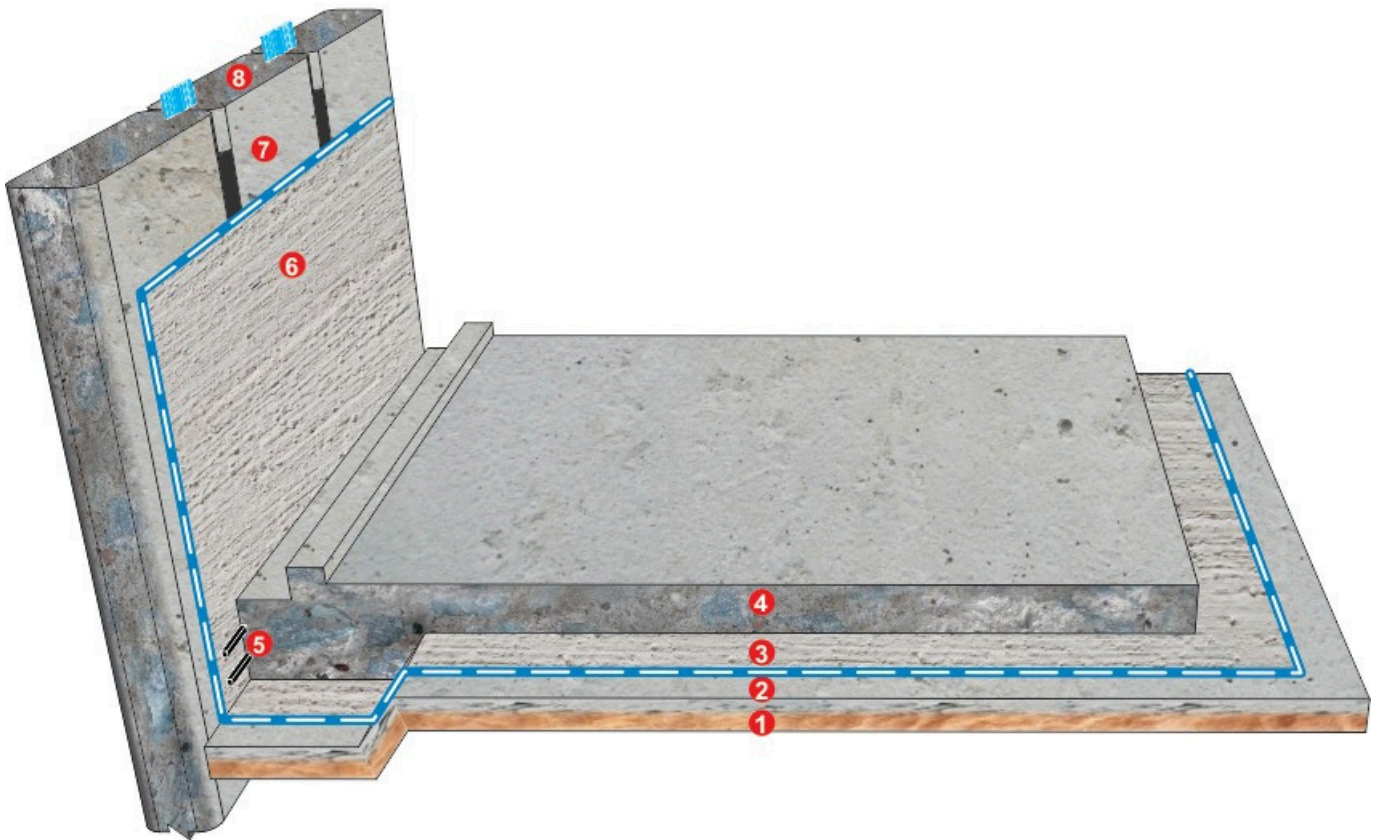
WATERPROOFING TO FLOOR & WALL

1. Compacted soil or sand
2. Blinding (lean) concrete.
3. Basement floor slab.
4. Waterproofing system: **MAXSEAL SUPER**
5. R.c. Wall
6. Waterproofing system: **MAXSEAL SUPER**
7. **Bentonite Hyperstop**



Product / sản phẩm:
MAXSEAL SUPER





WATERPROOFING TO FLOOR & WALL

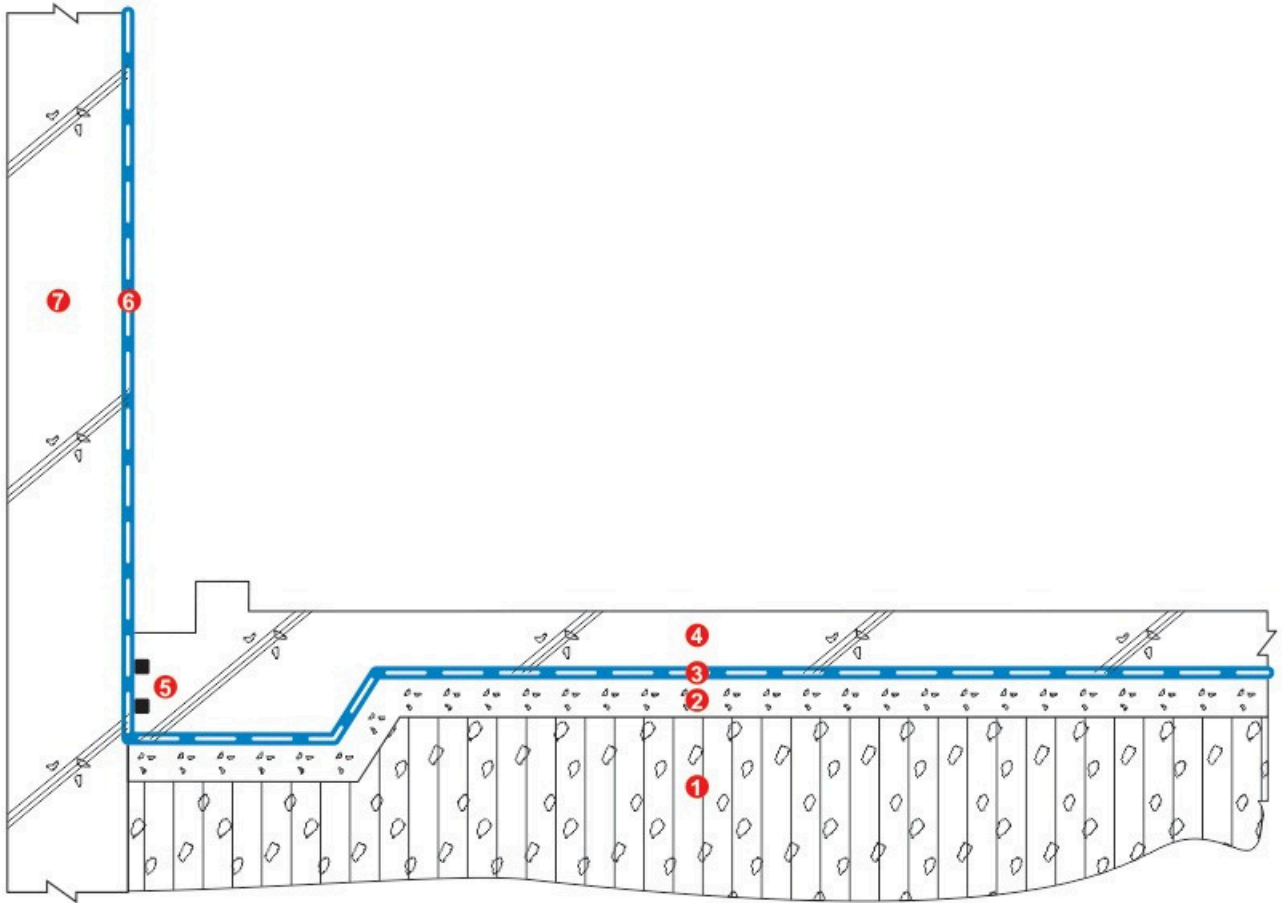
1. Compacted soil or sand or rock
2. 50 ~ 100 mm lean concrete
3. Waterproofing system: **MAXSEAL SUPER**
4. R.C. Floor slab.
5. **Bentonite Hyperstop**
6. Waterproofing system: **MAXSEAL SUPER**
7. Retaining wall
8. **PVC waterstop**

CHỐNG THẨM CHO SÀN & TƯỜNG

1. Lấp đất hoặc cát đầm chặt
2. Bê tông lót dày từ 50 ~ 100 mm
3. Hệ thống chống thấm: **MAXSEAL SUPER**
4. Sàn bê tông cốt thép
5. Băng cản nước **Bentonite Hyperstop**
6. Waterproofing system: **MAXSEAL SUPER**
7. Tường chắn đất tầng hầm
8. Băng cản nước **PVC waterstop**



TYPICAL SPECIFICATION - QUY TRÌNH KỸ THUẬT



WATERPROOFING FOR / CHỐNG THÂM CHO BASEMENT TẦNG HẦM

Project:

Shop Drwg

1.2



WATERPROOFING TO FLOOR

1. Compacted soil or sand or rock
2. 50 ~ 100 mm lean concrete
3. Waterproofing system:
MAXSEAL SUPER
4. R.C. Floor slab.
5. **Bentonite Hyperstop**
6. Waterproofing system :
MAXSEAL SUPER
7. Retaining wall

Manufacture & Supplier by:

Design & installation by:

